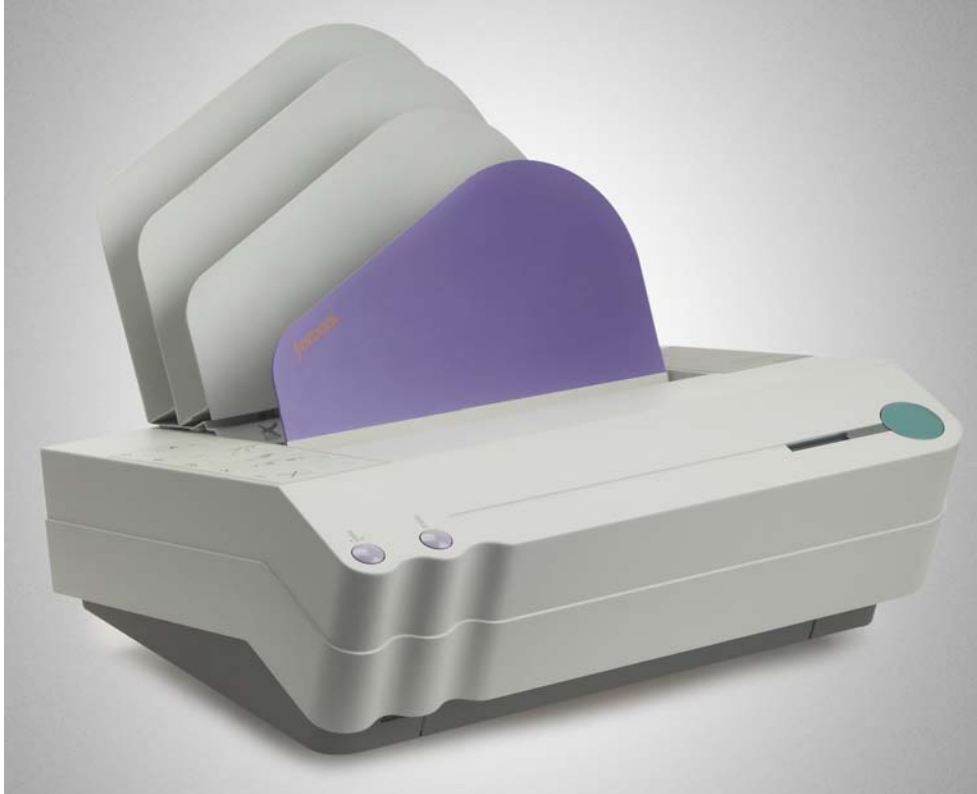


### Fastback Model FB25



The Fastback<sup>®</sup> 25 binding machine is engineered to give you the strongest possible bind for glossy, coated papers.

Using patented StitchFree<sup>™</sup> technology, the Fastback 25 produces binding that rivals sewing and wire-stitching in strength, but with much less expense and effort. And, like other Powis binding machines, it is so simple and intuitive that untrained staff can learn to use it in a matter of minutes.

The Fastback 25 binding machine uses the PhotoPro strip, and is ideal for binding photo books, yearbooks, art books, or other books printed on glossy paper. It is one of three components in the Fastback Photobook Work Cell. The other two are the Hardcover Guide<sup>™</sup> and the Splitter<sup>™</sup>.



## Specifications

**Machine Dimensions:** 25"W x 9.5"H x 22"D

(63 cmW x 24 cmH x 56 cmD)

**Max. weight:** 55 lbs (25 kg)

**Spine Lengths:** Max. 12" (30.38cm) (A4); Min. 6" (15.24cm)

**Spine Thickness:** Narrow, Medium

**Binding Capacity:** 10 sheets to 0.5" maximum thickness (1.9 cm)

**Page Sizes:** Max. 12," Min. 6"

**Paper Weight:** 80 gsm to 215 gsm

**Edit Capability:** No

**Binding Time:** 35-45 seconds

**Warm-up Time:** 9 minutes

**Power Requirements USA:** 115VAC, 60 Hz, 7 amps

International Binding & Laminating Systems Inc.

Head Office: #204-19232 Enterprise Way, Surrey, BC V3S 6J9

Sales Offices: Victoria BC, Montreal QC, ON North & South

T: 604.574.9508 / 1.800.663.8184 F: 604.574.3407 / 1.866.574.3407

E: [ibls@bindingandlaminating.com](mailto:ibls@bindingandlaminating.com)

[www.bindingandlaminating.com](http://www.bindingandlaminating.com)